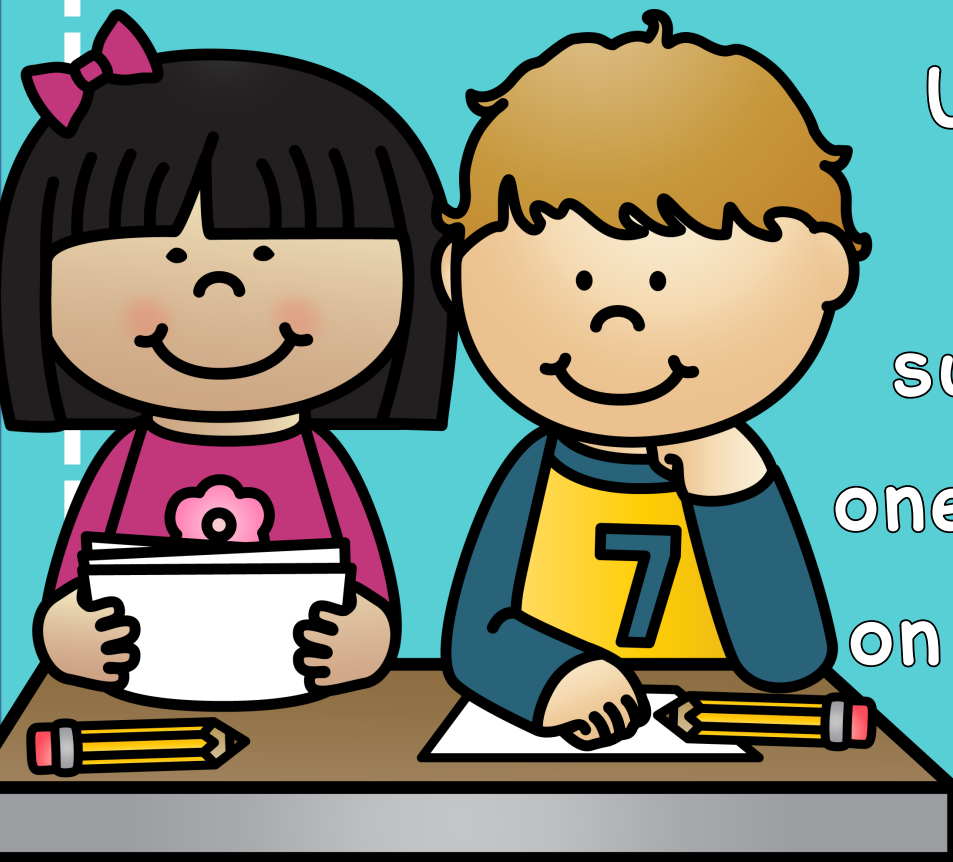


Hundred Chart Fill-Ins



Use what you know
about adding and
subtracting tens and
ones to fill in the boxes
on the hundred charts.

Name _____

1. Fill in **only** the gray boxes.

1	2	3	4	5	6	7	8	9	10
					16				
	22					27		29	
		33							
							48		50
					56				
61			64						70
		83						89	
	92				96				

2. Fill the empty boxes.

	56	

3. Fill the empty boxes.

	64	

4. Fill the empty boxes.

	89	

Name _____

1. Fill in **only** the gray boxes.

1	2	3	4	5	6	7	8	9	10
		13		15					
	22				26			29	
							38		40
		43		45					
51							58		60
	62			65		67		69	
71									80
	82					87			
		93		95				99	

2. Fill the empty boxes.

	26	

3. Fill the empty boxes.

	87	

4. Fill the empty boxes.

	43	

Name _____

1. Fill in **only** the gray boxes.

1	2	3	4	5	6	7	8	9	10
					16		18		
		23						29	
31			34		36				
	42					47			50
51		53		55			58		
	62				66				70
		73		75			78		80
81			84					89	
	92			95		97			100

2. Fill the empty boxes.

	66	

3. Fill the empty boxes.

	29	

4. Fill the empty boxes.

	53	

Name _____

1. Fill in **only** the gray boxes.

	2	3	4	5	6	7	8	9	10
		13					18		20
	22			25		27			
31		33					38		
	42			45		47		49	
51		53					58		60
	62			65		67		69	
	72							79	
81			84		86		88		
		93		95		97			100

2. Fill the empty boxes.

	25	

3. Fill the empty boxes.

81		

4. Fill the empty boxes.

51		

Name _____

1. Fill in **only** the gray boxes.

1	2	3	4	5	6	7	8	9	10
11					16			19	
			24						
31		33				37			40
	42				46				
						57			
		63		65			68		70
	72		74			77		79	
							88		90
91			94		96				

2. Fill the empty boxes.

		40

3. Fill the empty boxes.

		90

4. Fill the empty boxes.

		100